

# GETAWAY

Driving Techniques  
For Escape and Evasion  
*by Ronald George Eriksen 2*



**GETAWAY**  
*Driving Techniques for Escape and Evasion*

**By Ronald George Eriksen 2**

**Loompanics Unlimited    Port Townsend, WA**

**GETAWAY: Driving Techniques for Escape and Evasion**

© 1983 by Ronald George Eriksen 2

All Rights Reserved

Printed in USA

**Published by:**

*Loompanics Unlimited*

*PO Box 1197*

*Port Townsend, WA 98368*

***Cover and illustrations by Kevin Martin***

*"Make preparation in advance. You never have trouble if you are prepared for it."*  
- Theodore Roosevelt, 1910

*"Know the enemy and know yourself, in a hundred battles you will never be in peril."*  
- Sun Tzu, 400 B.C.

### *About the Author*

Ronald George Eriksen 2 is a veteran dirt track racer and survivor of several demolition derbies. In 1981 he graduated from the Bob Bondurant School of high performance driving in Sonoma, California. Other books by Eriksen include *HOW TO FIND MISSING PERSONS* and *HOW TO GET I.D. IN CANADA*.

## **PREFACE**

Many people have become concerned with the dramatic rise in assassinations and kidnappings in recent years. A great number of these attacks have occurred while the victim was in his automobile. The purpose of this book is to instruct the reader in the proper handling of his vehicle in the event of such an attack.

The skills of a grand prix driver are not necessary to learn these maneuvers. A few days of practice is all that is required. The time spent practicing is trivial when you consider what might happen if you are not prepared.

# CONTENTS

Vehicle Recommendations .....	1
Vehicle Improvements.....	2
Vehicle Security.....	7
Surveillance and Anti-Surveillance .....	9
Cornering .....	14
Bootlegger's Turn .....	19
Moonshiner Turn (Reverse 180) .....	22
Ramming.....	24
Vehicle Attack .....	31
Chase Situations .....	35
Suggested Training Schedule .....	38
Conclusion .....	39
Useful References.....	40

## **VEHICLE RECOMMENDATIONS**

The maneuvers in this book can be done in just about any car. The only cars which are completely unsuitable are jeep-type vehicles. Although fine for going off the road, jeeps have a tendency to tip over during turns.

The ideal vehicle is one that is powerful, easy to handle, and above all else, reliable. I have found that German-made cars are among the best in these respects. The only recently made German car that is under par is the Volkswagen "Rabbit" which is just too small and underpowered.

Although there are some notable exceptions, American and Japanese cars are not well known for their handling and performance qualities. They are made to give a soft cushy ride and little else. If you have to buy one of these, try to avoid both the small economy types and the oversized rolling boats, such as the larger Buicks and Oldsmobiles.

Also to be avoided are exotic European cars such as Ferraris and Lotuses. Although they are a true pleasure to drive, the fact that they stand out so much makes them a prime target for an attack.

# **VEHICLE IMPROVEMENTS**

Listed below are modifications which will enhance both the performance and reliability of a vehicle. Also listed are modifications which will serve as deterrents to an attack.

## ***Tires***

Get the best radial tires you can afford. Radials offer increased durability, superior handling, and better gas mileage than old-fashioned bias ply tires. Also, to some degree, radials are bullet resistant. Be sure to slightly over inflate all four tires and to fill them with run flat foam (available in auto supply and department stores).

## ***Heavy Duty Radiator***

Hard driving, hot weather and rough terrain make for overheated engines. A heavy duty radiator helps prevent this from happening.

## ***Heavy Duty Shocks and Springs***

Other than good tires, nothing will improve your car's handling more than top quality shocks and springs. Shocks and springs are items where price is an indication of quality, so get the best you can afford.

## ***Stainless Steel Brake Lines***

Rubber brake lines sometimes swell and flex, causing the brakes to fade. Stainless steel brake lines are used in racing competition and are recommended particularly to those living in mountainous areas.

## ***Heavy Duty Steering Pump***

If your car has power steering, a series of quick turns might cause the steering fluid to foam, making steering extremely difficult. A heavy duty steering pump serves to prevent this.

## ***Heavy Duty Battery***

If you are going to add additional lights and communications gear to your car, a heavy duty battery is a must.

## ***Lights***

You should replace your old-fashioned sealed beam headlights with quartz-iodine lights. These give off twice the light of the sealed beam units and will enable you to drive much faster at night. There are quartz-iodine lights to fit almost every vehicle. You might also consider mounting additional lights on your vehicle. Auxiliary lights should be mounted low and angled slightly outward.



## ***Spotlights***

Four high intensity spotlights should be mounted high on your vehicle. These will effectively blind an attacker. Three of the spotlights should be directed to the front, one aiming straight ahead and the other two angled slightly outboard. A fourth light should be aimed to the rear.

## ***Cut Out Switches***

Cut out switches enable you to independently control each light on your vehicle. The addition or elimination of various lights at night will alter the appearance of your vehicle and might allow you to lose a pursuer.

## ***Vehicle Alarm System***

A good alarm system should not only guard against theft, but also against tampering. "Consumer" type publications often rate the various alarm systems and you should consider their advice before buying one.

## ***Armor***

There are many problems involved in the armoring of vehicles, not the least of which is cost. A bargain basement armoring job, offering some protection against a .30 caliber rifle will cost you about \$20,000. A fully armored vehicle capable of withstanding repeated hits from a .30 caliber rifle will run you about \$200,000. Most of us don't have that kind of money lying around.

Another problem with armoring is that there is no such thing as bullet proof glass. There is only "bullet resistant" glass. We saw how effective this glass was during the attempted assassination of President Reagan. During the attack, a round from the assailant's lowly .22 pistol penetrated the glass on the presidential vehicle.

Yet another problem associated with armoring is the weight added to the vehicle. A 25% increase in vehicle weight will cause a corresponding decrease in the vehicle's handling capabilities.

If you can't afford the high cost of a full armor job, then I suggest that you affix a half-inch aluminum plate to the back of each seat. For most of the evasive maneuvers in this book, the only clear shot a bandit or terrorist will have is at the rear of your vehicle. While the half-inch plate won't protect you against all weapons, it does offer inexpensive protection against submachine guns and pistols.

### ***C.B. Radio's***

Even though C.B. radios are a virtual party line, the fact that somebody is always listening in could prove useful in an emergency. Also to be considered is the use of two-way radios between the car and home.

### ***Siren and Oscillating Light***

A siren and oscillating light will attract attention in the event of an attack. Don't use them except in an emergency, as law enforcement people tend to frown on civilian use of them.

### ***Good Mirrors***

Either wide angled or electronically controlled mirrors will allow you to see what is going on behind you without turning your head.

### ***Locking Gas Cap***

A locking gas cap prevents anyone from using the gas tank as a receptacle for explosives. It will also prevent Halloween pranksters from putting unwanted items in the tank.

### ***Gun and Crowbar in Trunk***

Kidnappers have been known to throw the victim into the trunk of his own car. A gun and a prying instrument such as a crowbar could prove useful in an escape.

### ***Pressurized Oil Slick***

A pressurized device which sprays oil onto the roadway will eliminate almost any pursuer. A book which details how to make one of these devices is mentioned in the reference section.

### ***Caltrops***

Caltrops are metal spikes constructed so that one point is always up. If thrown in the road behind you, they will flatten the tires of a pursuing vehicle. One company who sells them is Beaver Products, PO Box 1580, Anna Maria, FL 33501.

### ***Thick Bolt Through Tailpipe***

A thick heavy bolt put through the tailpipe and welded into place will prevent a bomb from being placed in the exhaust system.

### ***Smoke Screen***

A cheap but effective smoke screen can be made as follows: First drill a hole into the exhaust manifold of your car, and weld the nozzle of a small plant sprayer over it. A gas line is then run from the nozzle to a pump and container containing castor oil inside the vehicle. Clouds of smoke are produced by pumping the castor oil onto the hot exhaust manifold.

In a recent Chicago bank robbery, the bandits fabricated a smoke screen by filling a fire extinguisher with some chemical. What the chemical was and how they shot it out of the vehicle, I don't know. I do know that in addition to the considerable smoke, a noxious odor was also produced.

### ***Reinforced Ram Bumpers***

Bumpers can be reinforced by bolting or welding extra supports from the vehicle frame to the bumper. Further reinforcement can be made by welding a two-inch metal pipe to the vehicle frame, right in back of the bumper. These extra reinforcements could prove useful in a ramming situation.

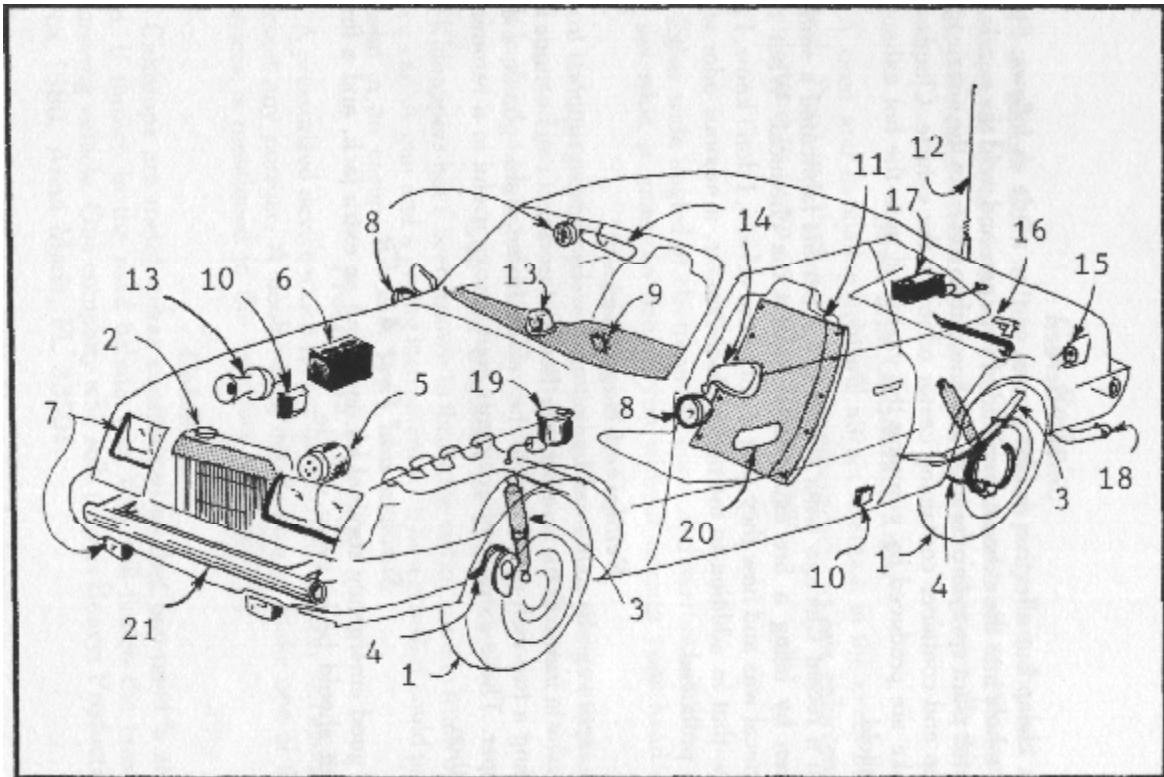
### ***Survival and First Aid Kit***

A good emergency survival kit, including an extra jack, and a first aid kit should be in every vehicle.

## KEY

- 1 Tires
- 2 Heavy duty radiator
- 3 Heavy duty shocks
- 4 Stainless brake lines
- 5 H.D. steering pump
- 6 H.D. battery
- 7 Lights
- 8 Spotlights
- 9 Cutout switches
- 10 Alarm
- 11 Armor
- 12 CB radio
- 13 Siren & light
- 14 Mirrors
- 15 Locking gas cap
- 16 Escape kit
- 17 Oil slick
- 18 Bolt thru exhaust
- 19 Smokescreen
- 20 Gun ports
- 21 Ram bumpers

**Illustration of a car with all vehicle recommendations.**



# VEHICLE SECURITY

Both terrorists and everyday street criminals operate in a fashion similar to predatory animals -- they will always choose the weakest prey or the easiest mark to attack. By being security conscious at all times, you can increase the odds that they will choose someone else.

What follows are some general security recommendations which can be easily implemented when in or around your vehicle. These recommendations will be your first line of defense against an attack.

- (1) Vary the times and routes to and from work. Avoid fixed routines.
- (2) Have thorough knowledge of the area you are driving in.
- (3) Avoid getting boxed-in in traffic.
- (4) Always park so you have a fast exit from your parking space.
- (5) Never stop for anyone.
- (6) Drive on major thoroughfares, if possible.
- (7) Know the shortest routes to police stations, hospitals, army outposts, etc.
- (8) Check rear-view mirrors frequently.
- (9) Inform someone of your destination and estimated time of arrival.
- (10) Be wary of groups of men in uniform (jogging suits, janitor outfits, etc.).
- (11) Never trust anyone with your key.
- (12) Avoid construction areas.
- (13) Keep your gas tank at least half full.
- (14) Never depend on a chauffeur. Drive yourself.
- (15) If your car has been left alone, check it thoroughly for tampering before driving it.
- (16) If suspicious people are observed loitering about your vehicle, avoid it.
- (17) Maintain a low profile.

Obviously, not everyone need be so concerned with their personal safety. The security needs of someone living in Medicine Hat, Wyoming, will be considerably different from someone living in El Salvador. You alone will have to determine what your particular situation requires.

### ***Color Code***

One excellent way to become alert to danger is through the color code system of awareness developed by the 82nd Airborne Division in World War II. Here's how it works:

*Condition Green.* In Condition Green, you are completely relaxed and unalert. If you are violently attacked while in this condition, you will most likely be destroyed. In today's violent times one should never be in this condition.

*Condition Yellow.* This is a state of general awareness. There is no specific threat, but you are alert and ready for action should any signs of danger occur.

*Condition Orange.* Here you recognize something specific as a potential threat and your mind is focused on the danger.

*Condition Red.* The trouble has escalated and a violent confrontation is unavoidable. You must act forcefully now.

The most important transition in this color code system is from yellow to orange. Condition Yellow is simply a state of general alertness. In Condition Orange, there is a specific possible danger. The sooner you perceive a potentially dangerous situation, the better off you will be should things degenerate into a violent confrontation.

# **SURVEILLANCE AND ANTISURVEILLANCE**

One of the keys to avoiding a terrorist attack is recognizing when you are under surveillance. In almost all recent terrorist attacks, the victim had been under surveillance -- sometimes for as long as several months prior to the attack.

In order to stop an attack before it occurs, you must develop surveillance awareness. To develop this awareness you must be constantly alert to suspicious people in the vicinity of your home and at work.

In stalking their victims, terrorists have posed as laborers, hookers, derelicts, and used numerous other ruses. I do not expect you to become a raving paranoid constantly on red alert against everyone and everything, but it should be in the back of your mind that someone's eyes might be watching you.

## ***Tactics of Professional Surveillance***

To my knowledge, there have been no instances of terrorists using the sophisticated techniques of surveillance employed by professional investigators. Nevertheless, it can be assumed that sooner or later they will be using these methods. In any case, it is always best to be prepared for anything.

### ***The Single Tail***

The easiest type of surveillance to detect is when you are being followed by a single surveillant. The lone surveillant must stay close enough to keep you in sight, yet far enough away to avoid detection -- no easy feat. In residential areas, he can remain a few cars back due to the density of traffic. Also he has the option of following the victim on a parallel street. In rural areas, about all he can do is remaining well back and hope for the best.

The single tail may employ certain tricks of the trade to make his job easier. At night, he may break a taillight or place a small luminous sticker on the rear of the victim's vehicle to make it more distinguishable. To decrease the possibility of detection, he may change his seating position or use various types of disguise.

Professional investigators, whether governmental or private, rarely conduct a surveillance using a single unit. The risk of getting burned is just too great.

### ***Parallel Surveillance***

This type of surveillance is conducted by two or more vehicles. One vehicle tails the victim at a reasonable distance. His comrades follow on parallel streets ready to take up close surveillance should the victim turn (see Figure 1). Obviously, this method will not work in areas where there are no parallel roads.

### ***Leap Frog Surveillance***

In this method, one surveillant tails the victim closely while his partner stays well ahead of both vehicles (see Figure 2).

The great advantage to this method is that the tailing vehicle can fall far behind while the lead vehicle slows down and establishes visual contact with the victim. Also, the tailing and lead vehicles can exchange positions to avoid detection.

The tailing and lead vehicles must be in radio contact for this method to be effective.

### ***Bumper Beepers***

The most effective means of tailing a vehicle is with a bumper beeper. An electronic tailing device, the bumper beeper attaches to the underside of the victim's car. The device sends beeping signals to a receiver in the tailing vehicle. The closer the tailing vehicle gets to the target vehicle, the louder the beeps become. The more sophisticated beepers are equipped with a null switch, whereby a different tone in the beep is produced if the victim turns right or left. Bumper beepers have an effective range of from 1 to 5 miles. They are usually attached to the vehicle with powerful magnets, although heavy metal clamps are sometimes used. Beepers can be either battery powered or attached directly to the target vehicle's own electrical system.

### ***Detection of Bumper Beepers***

To determine if you are a victim of these dreaded devices, first make a complete visual inspection of the underside of your vehicle. What you are looking for is a small metal box with one or two skinny antennas sticking out of it.

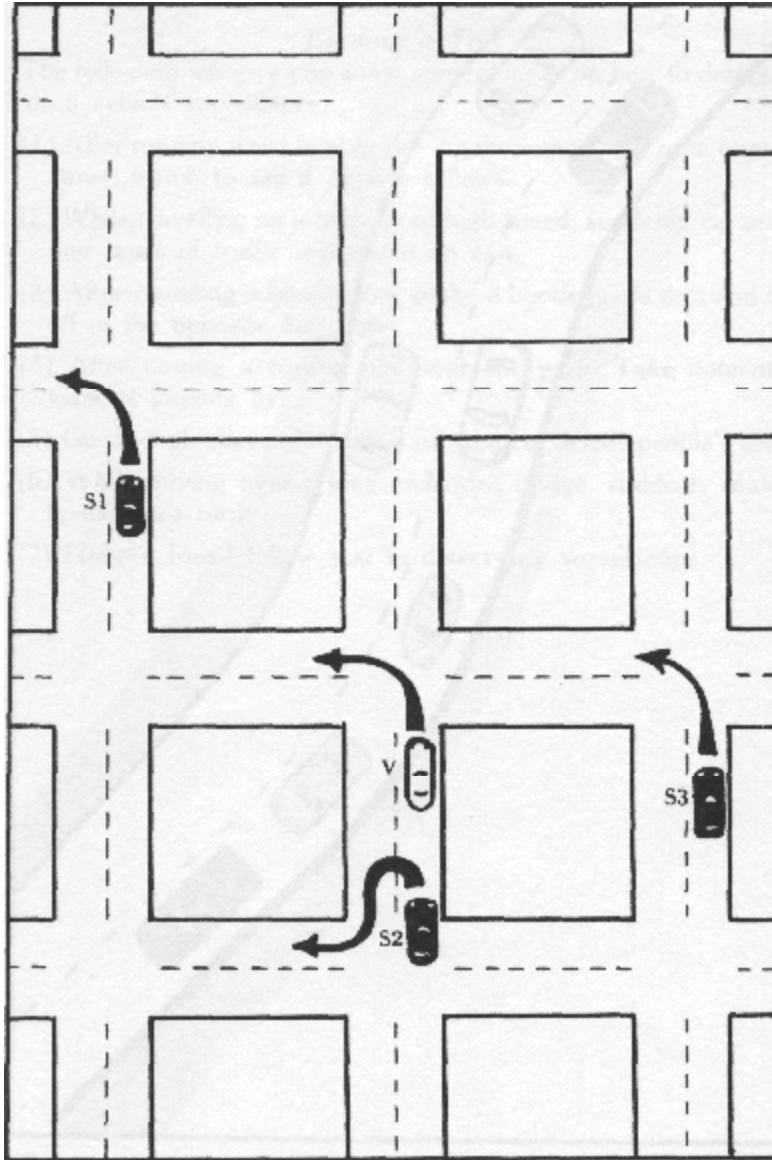
If your search turns up nothing, go out and buy a field strength meter (available from any electronics store). These devices detect all radio transmissions.



**Figure 1**

Parallel Surveillance in action

After victim (V) turns, S3 turns after him. S1 and S2 follow on parallel streets.

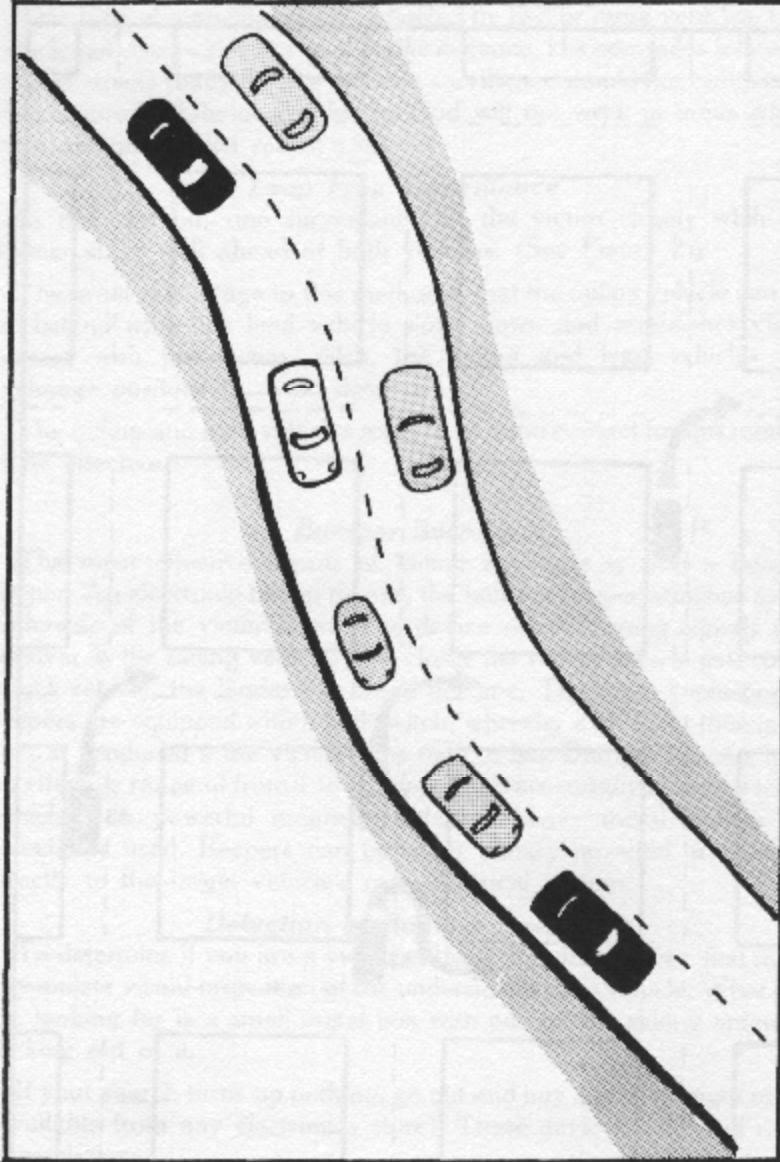


**Figure 2**

Leap Frog Surveillance

Victim is in white car; surveillants in black cars.

Surveillance vehicles can switch positions to avoid detection.



With field strength meter in hand and the vehicle's ignition on, check in, on, and especially under, your car. If you are a victim of a bumper beeper, the meter will tell you where it is.

### ***Eluding a Tail***

The following will give you some general ideas on how to detect and elude vehicle surveillance.

- (1) After running a red light or driving the wrong way on a one-way street, watch to see if anyone follows.
- (2) While travelling on a freeway at high speed, suddenly cut across four lanes of traffic and make an exit.
- (3) After rounding a blind curve, make a bootlegger's turn and take off in the opposite direction.
- (4) After turning a corner, pull over and park. Take note of all vehicles passing by.
- (5) Go through alleys, dirt roads, or even cut across people's lawns.
- (6) While driving over a long undivided bridge, suddenly make a bootlegger's turn.
- (7) Have a friend follow you to detect any surveillance.

## **CORNERING**

It is a commonly held belief that the best way to handle corners is to blast through them as quickly as possible. This is completely wrong. The speed at which you exit a corner is much more important than the speed at which you take the corner itself. Assuming identical cars, the car which exits the corner at the greater speed will be going faster on any straight stretch of road that follows.

### ***Proper Apex***

The apex of any turn is that point at which your wheels are closest to the inside edge of the corner. By choosing a relatively late apex, the driver can exit a corner at a greater speed than if he had chosen an early one.

### ***The 90-degree Turn***

Figure 3 shows how to handle a 90-degree turn. This is the most common type of turn, particularly in urban areas.

This turn is begun as far to the outside as possible. Obviously, if there is a lot of traffic on the road, you are going to have to adjust your turn. In that case, drive as far to the outside as you can within the confines of your lane.

Approaching the corner, gradually increase braking pressure to heavy breaking. Be careful not to lock the brakes, as all this does is prevent you from steering. If you feel any of the wheels locking up, let off the brakes for an instant, and then reapply them.

After downshifting (manual transmissions only), start trailing off the brakes into the first third of the turn. Then gradually increase the throttle to full acceleration coming out of the turn.

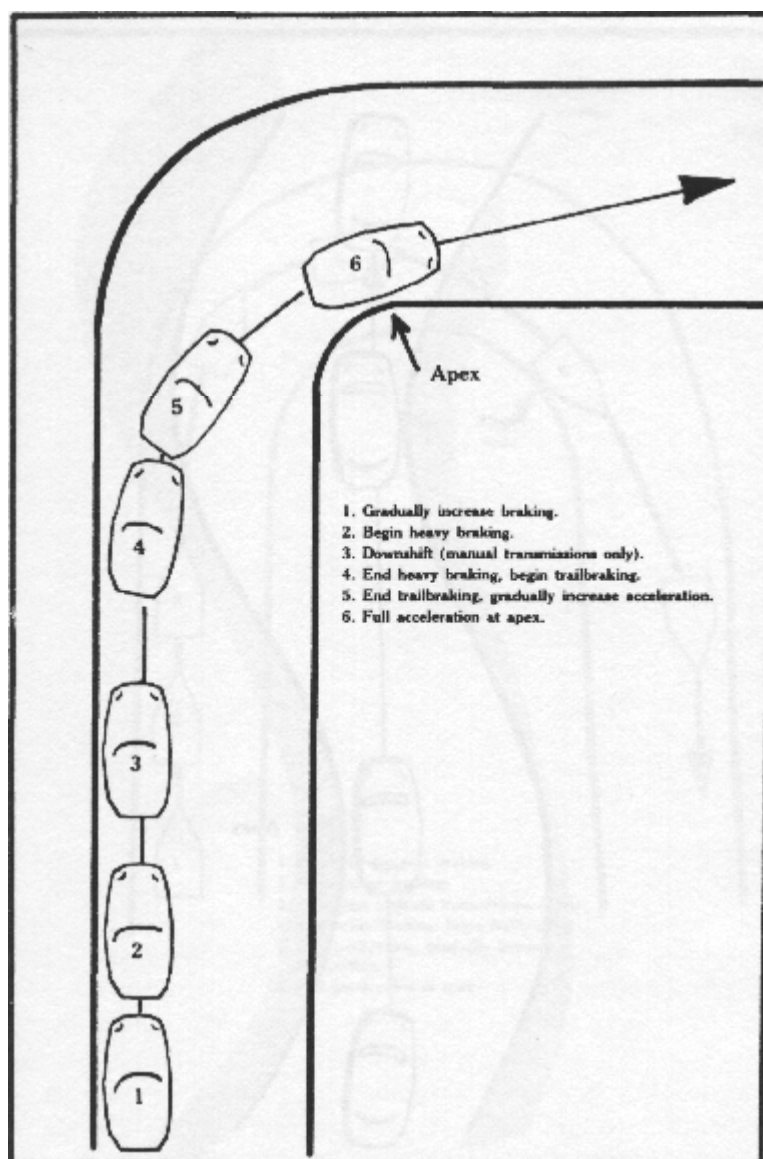
### ***S Turns***

Figure 4 illustrates an S type turn. Actually, this need not be a turn at all, as you can go straight through it. Remember to set yourself up to take full advantage of any straight that might follow.

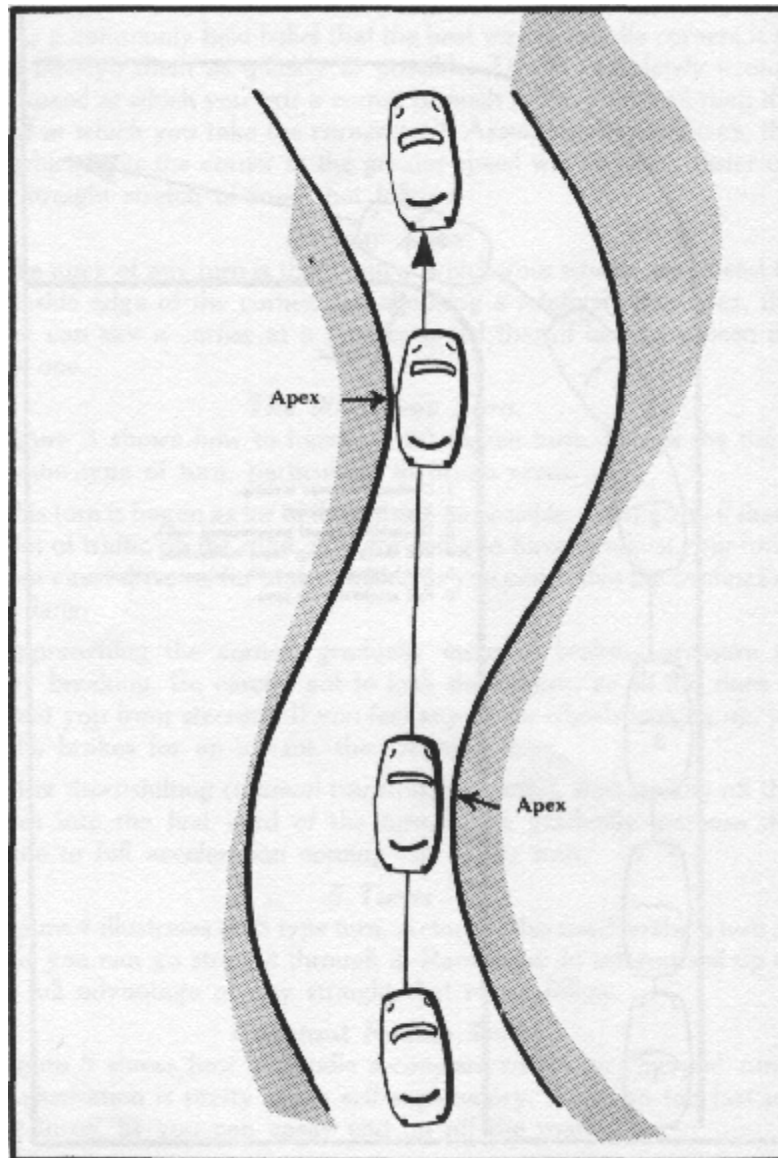
### ***Constant Radius Turn***

Figure 5 shows how to handle a constant radius, or "hairpin" turn. The illustration is pretty much self-explanatory. Don't go too fast on these turns, as you can easily end up off the road.

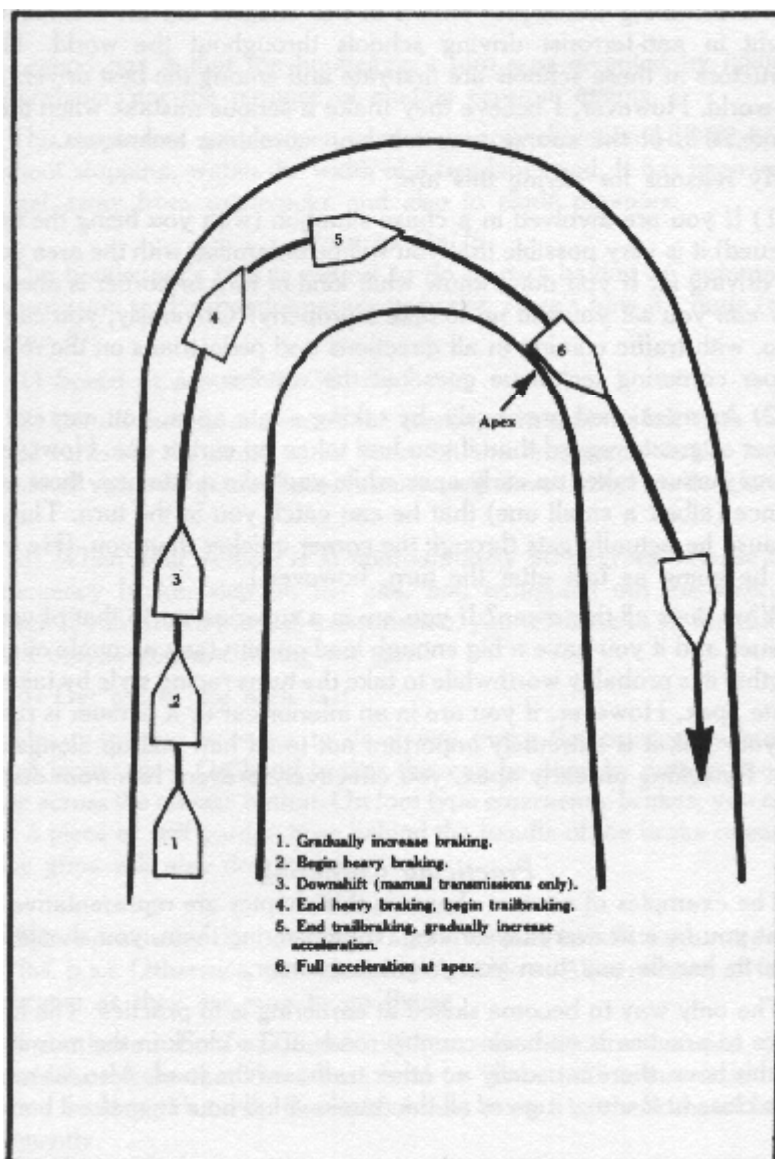
**Figure 3**  
Taking a 90-degree turn



**Figure 4**  
S Turn



**Figure 5**  
Constant Radius Turn



## ***Cornering***

The cornering techniques shown in this chapter are the techniques taught in anti-terrorist driving schools throughout the world. The instructors at these schools are first-rate and among the best drivers in the world. However, I believe they make a serious mistake when they spend 70% of the course time teaching cornering techniques.

My reasons for saying this are:

- (1) If you are involved in a chase situation (with you being the one pursued) it is very possible that you will be unfamiliar with the area you are driving in. If you don't know what kind of turn or corner is ahead, how can you set yourself up to take it properly? Obviously, you can't. Also, with traffic coming in all directions and pedestrians on the road, proper cornering technique goes out the window.
- (2) As mentioned previously, by taking a late apex, you can exit a corner at greater speed than if you had taken an earlier one. However, if your pursuer takes an early apex while you take a late one, there is a chance (albeit a small one) that he can catch you in the turn. This is because he actually gets through the corner quicker than you. (He will not be going as fast after the turn, however.) What does all this mean? If you are in a superior car to that of your pursuer and if you have a big enough lead on him (say a couple of car lengths) it is probably worthwhile to take the turns racing style by taking a late apex. However, if you are in an inferior car or a pursuer is right on your tail, it is extremely important not to let him pull up alongside you. By taking an early apex, you effectively prevent him from doing so.

## ***Practicing Cornering***

The examples of corners shown in this chapter are representative of what you face in everyday driving. By mastering them, you should be able to handle any turn you might encounter.

The only way to become skilled at cornering is to practice. The best place to practice is on back country roads at 3 o'clock in the morning. At this hour, there is usually no other traffic on the road. Also, as most bars close at 2 a.m., it gives all the drunks a full hour to make it home.



# **BOOTLEGGER'S TURN**

Legend has it that the bootlegger's turn was invented by hillbilly moonshiners for the purpose of eluding revenue agents.

This maneuver enables you to change your direction 180 degrees, without stopping, within the width of a two lane road. It has been used to get away from roadblocks and also to elude pursuers.

## ***How to Do It***

The bootlegger's turn is easiest to do in cars having an automatic transmission and a hand emergency brake. Here's how it's done (see Figure 6):

- (1) Speed at around 25-30 mph.
- (2) Get off the gas and crank the steering wheel to the left  $\frac{1}{4}$  to  $\frac{1}{2}$  of a full turn. At the exact same time, hit the emergency brake hard. Those of you with manual transmissions will have to depress the clutch, also.
- (3) When your vehicle is at approximately 90 degrees, release the emergency brake, step on the gas, and straighten out the steering wheel. If you have a manual transmission, you will have to let the clutch back out as you are hitting the gas.
- (4) Get out of the area fast.

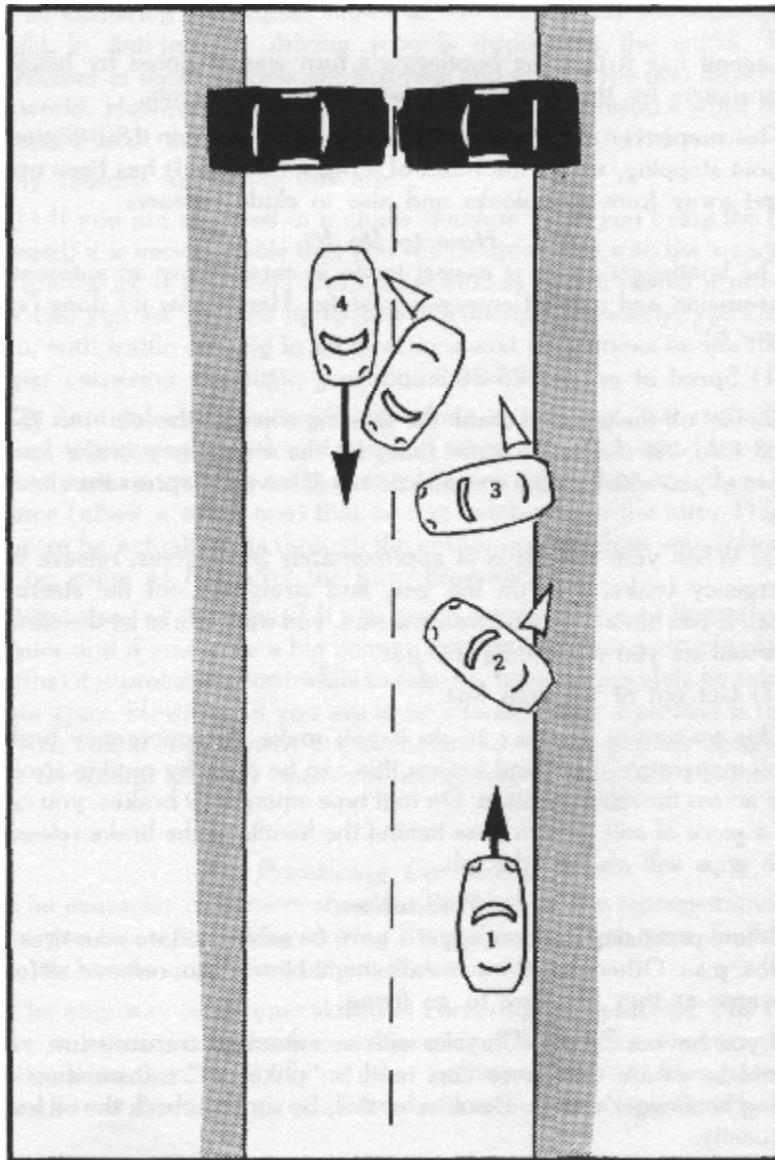
This maneuver is easier to do if you make the emergency brake catch inoperative. On hand brakes this can be done by putting strong tape across the release button. On foot type emergency brakes, you can put a piece of stiff garden hose behind the handle of the brake release. Vice grips will also do the job.

## ***Precautions***

Before practicing the bootlegger's turn, be sure to inflate your tires to 40 lbs psi. Otherwise, the sidewalls might blow. Also, remove all four hubcaps, as they are sure to go flying.

If you have a Ford or Chrysler with an automatic transmission, you should be aware that these cars tend to "puke out" transmission oil during bootlegger's turns. Because of this, be sure to check the oil level frequently.

**Figure 6**  
Bootlegger's Turn



The bootlegger's turn will cause incredible wear and tear on your front tires. For this reason, it is recommended that you learn how to do the maneuver on rental cars. Hertz, Avis, Budget, etc., offer a wide variety of cars. You should be able to find something similar to what you now drive. Needless to say, don't tell the rental agency people what you are planning to use their car for.

### ***TV Shows***

TV programs such as The Dukes of Hazzard, The Rockford Files and The Fall Guy often show the bootlegger's turn during their chase scenes. The driving in these shows is done by professionals and you can learn a lot just by watching them. You can also learn a lot from watching auto races and demolition derbies, both live and on TV.

## **MOONSHINER'S TURN (Reverse 180)**

The moonshiner's turn is another slick maneuver pioneered by the mountain people of the Southern United States.

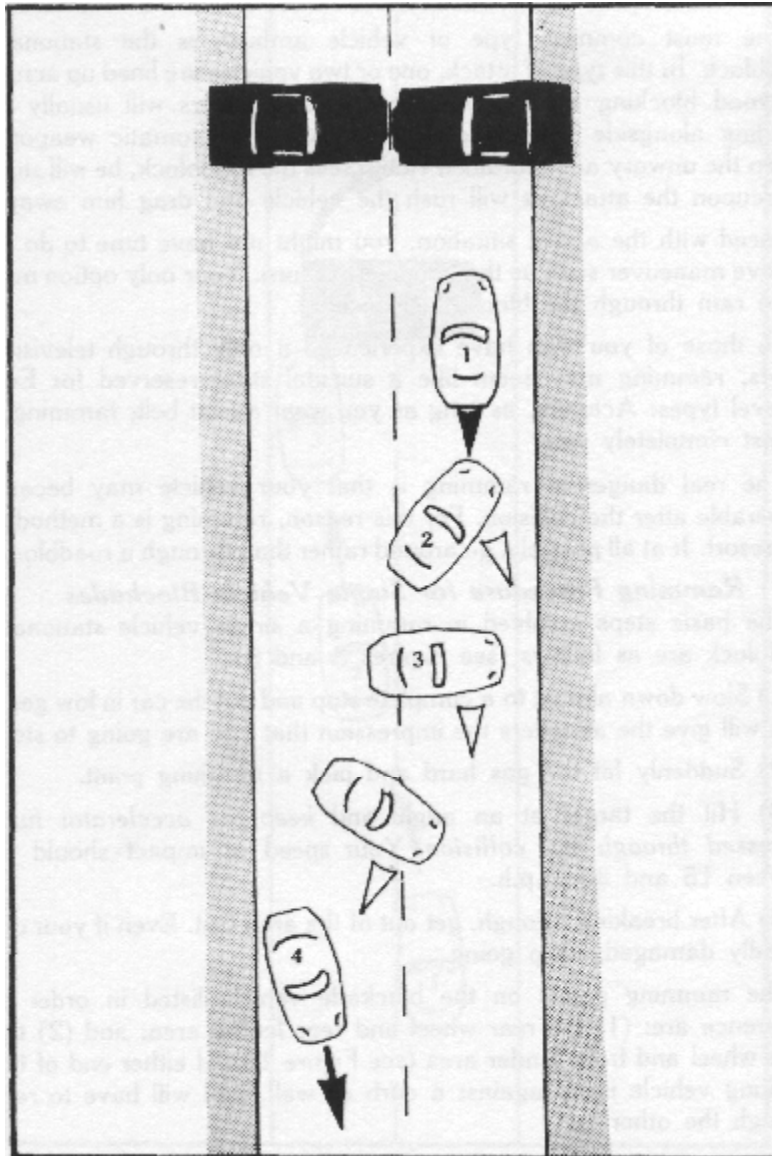
Looking like a bootlegger turn in reverse, the moonshiner's turn allows you to change your direction 180 degrees within the confines of a two lane road, while going backwards.

The proper procedure for this maneuver is as follows (see Figure 7):

- (1) Accelerate in reverse to 20-30 mph.
- (2) Get off the gas and crank the steering wheel all the way to the left as fast as you can.
- (3) When the car is at 90 degrees, shift into low gear, hit the gas, and straighten out the steering wheel.
- (4) Get out of the area fast.

This maneuver is particularly effective against roadblocks at night. Often the attackers manning the roadblock will use high-intensity lights to blind the victim as he approaches. By using the moonshiner's turn, the victim's vision is directed away from the lights.

**Figure 7**  
Moonshiner's Turn



# RAMMING

The most common type of vehicle ambush is the stationary roadblock. In this type of attack, one or two vehicles are lined up across the road blocking the victim's way. The attackers will usually be standing alongside the blockade vehicles with automatic weapons. When the unwary and untrained victim sees the roadblock, he will stop, whereupon the attackers will rush the vehicle and drag him away.

Faced with the above situation, you might not have time to do an evasive maneuver such as the bootlegger's turn. Your only option may be to ram through the blockade vehicle(s). To those of you who have experienced it only through television shows, ramming may seem like a suicidal stunt reserved for Evel Knievel types. Actually, as long as you wear a seat belt, ramming is almost completely safe.

The real danger in ramming is that your vehicle may become inoperable after the collision. For this reason, ramming is a method of last resort. If at all possible, go around rather than through a roadblock.

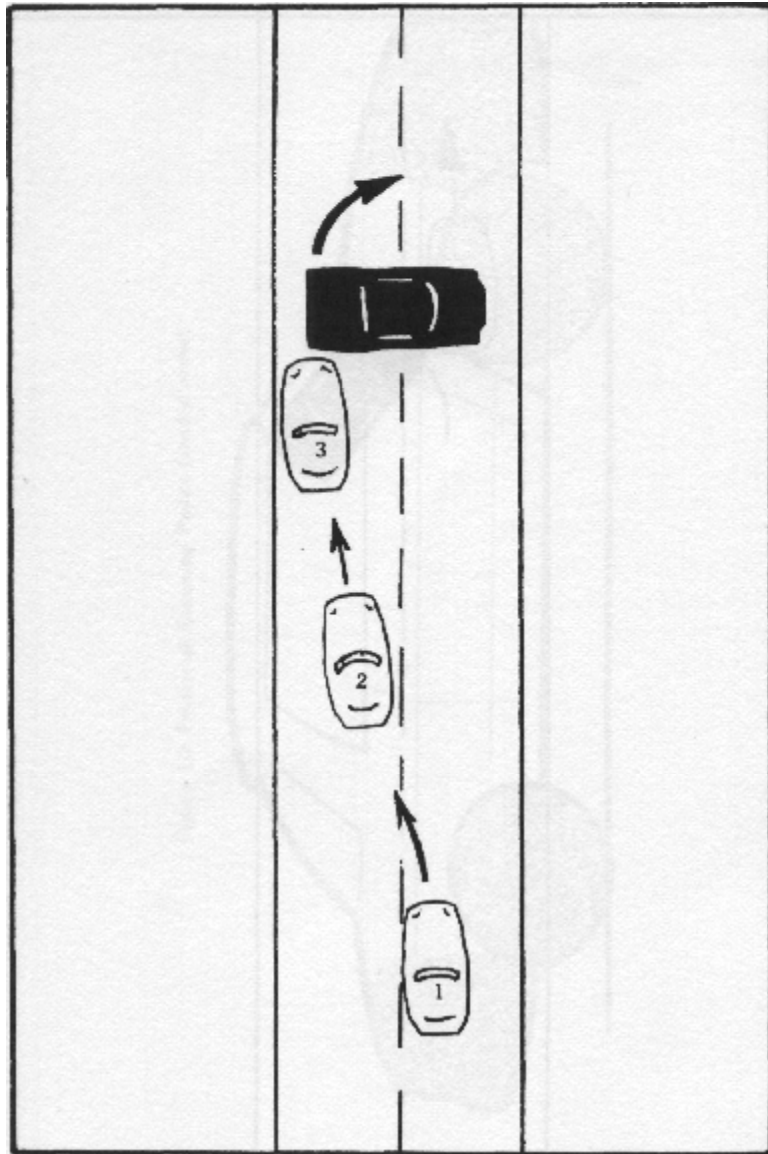
## ***Ramming Procedure for Single Vehicle Blockades***

The basic steps involved in ramming a single vehicle stationary roadblock are as follows (see Figures 8 and 9):

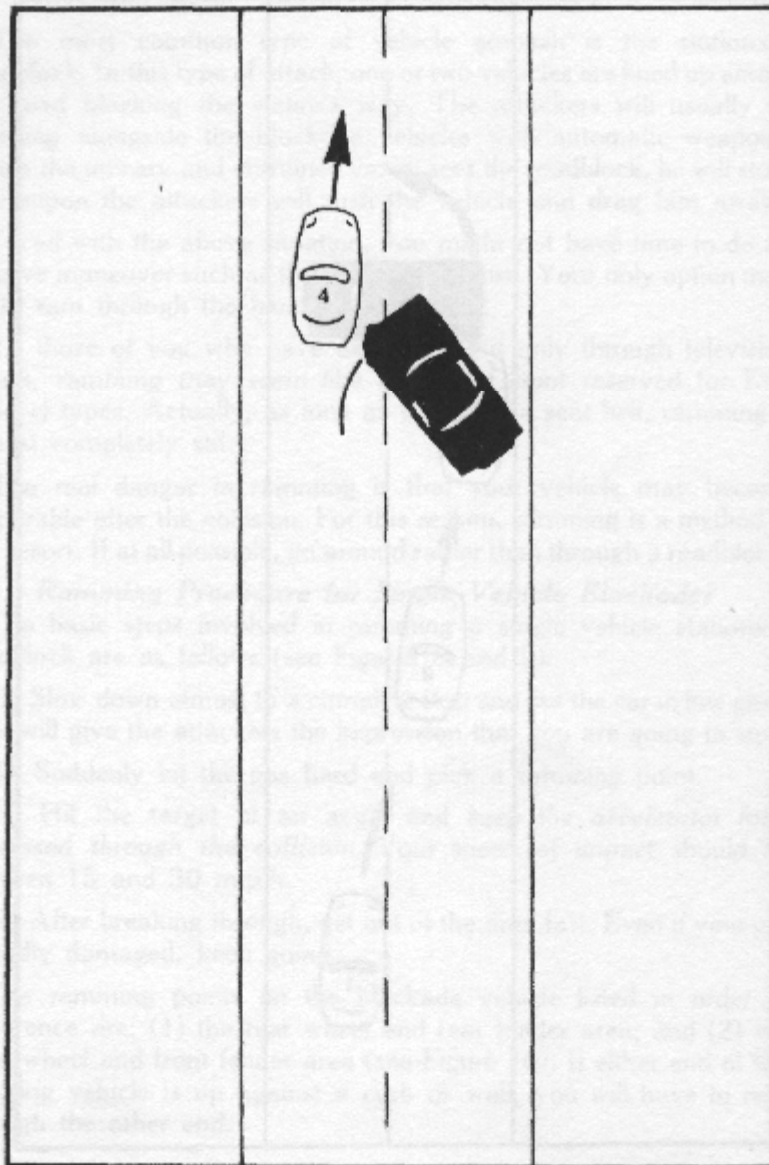
- (1) Slow down almost to a complete stop and put the car in low gear. This will give the attackers the impression that you are going to stop.
- (2) Suddenly hit the gas hard and pick a ramming point.
- (3) Hit the target at an angle and keep the accelerator fully depressed through the collision. Your speed at impact should be between 15 and 30 mph.
- (4) After breaking through, get out of the area fast. Even if your car is badly damaged, keep going.

The ramming points on the blockade vehicle listed in order of preference are: (1) the rear wheel and rear fender area; and (2) the front wheel and front fender area (see Figure 10). If either end of the blocking vehicle is up against a curb or wall, you will have to ram through the other end.

**Figure 8**  
Ramming a Single Vehicle Blockade

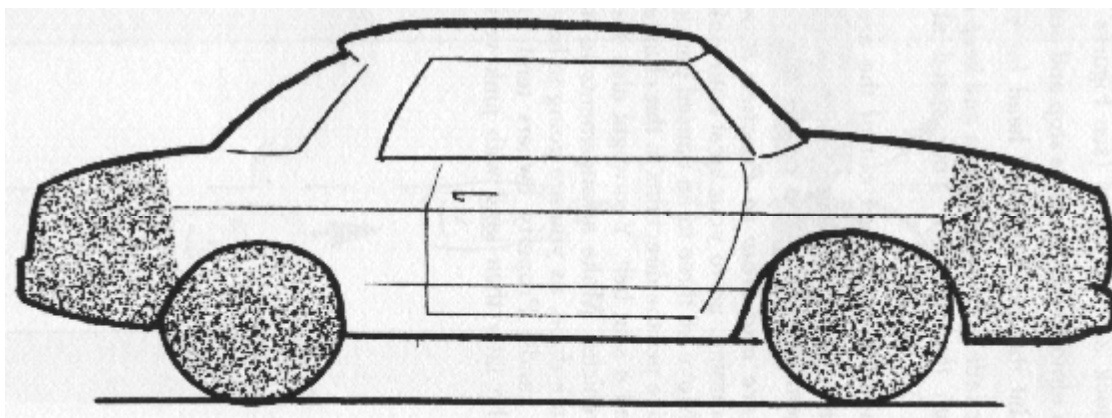


**Figure 9**  
Ramming a Single Vehicle Blockade (cont'd)





**Figure 10**  
Preferred Ramming Points (shaded areas)



### ***Ramming Procedure: Double Vehicle Blockade***

The basic steps involved in ramming through a double vehicle stationary roadblock are as follows (see Figures 11 and 12):

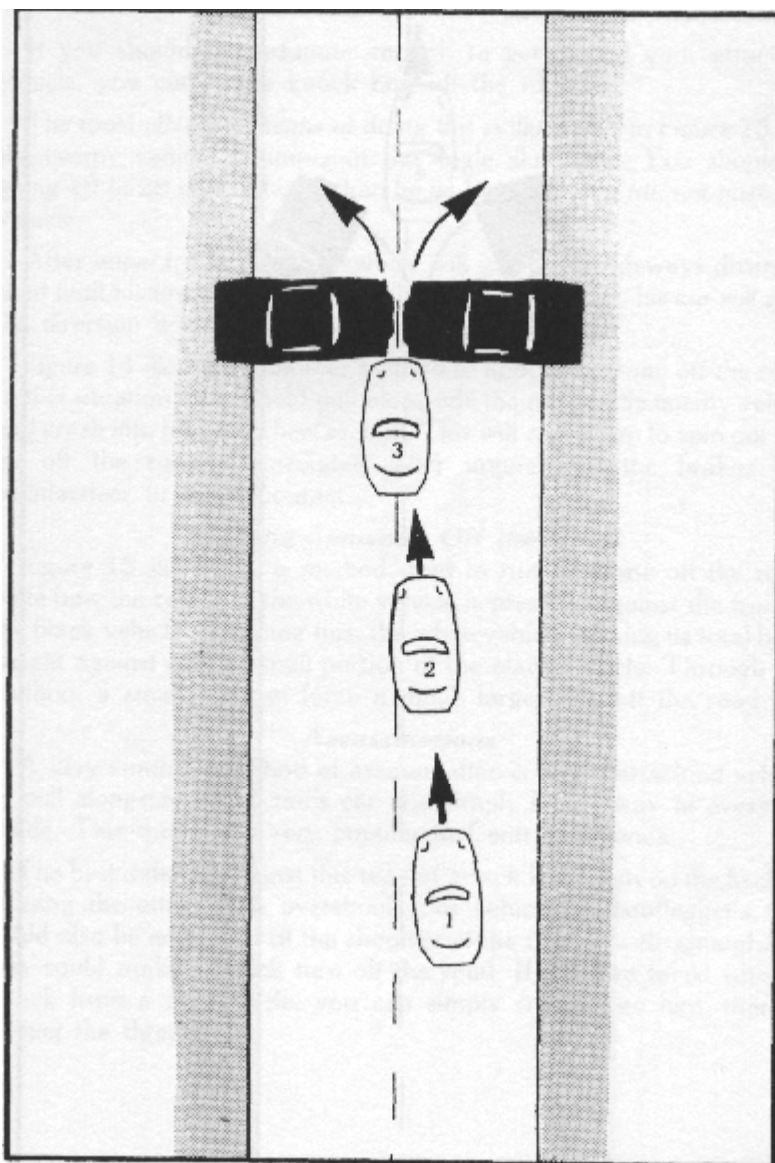
- (1) Slow down almost to a complete stop and put the car in low gear.
- (2) Suddenly hit the gas hard and head for your ramming point.
- (3) Hit the blockade right in the middle and keep the accelerator fully depressed through the collision. Your speed at impact should be between 15 and 30 mph.
- (4) After breaking through, get out of the area fast.

If any of the attackers should be so foolish as to get in your way, run them over. Remember, your life is on the line.

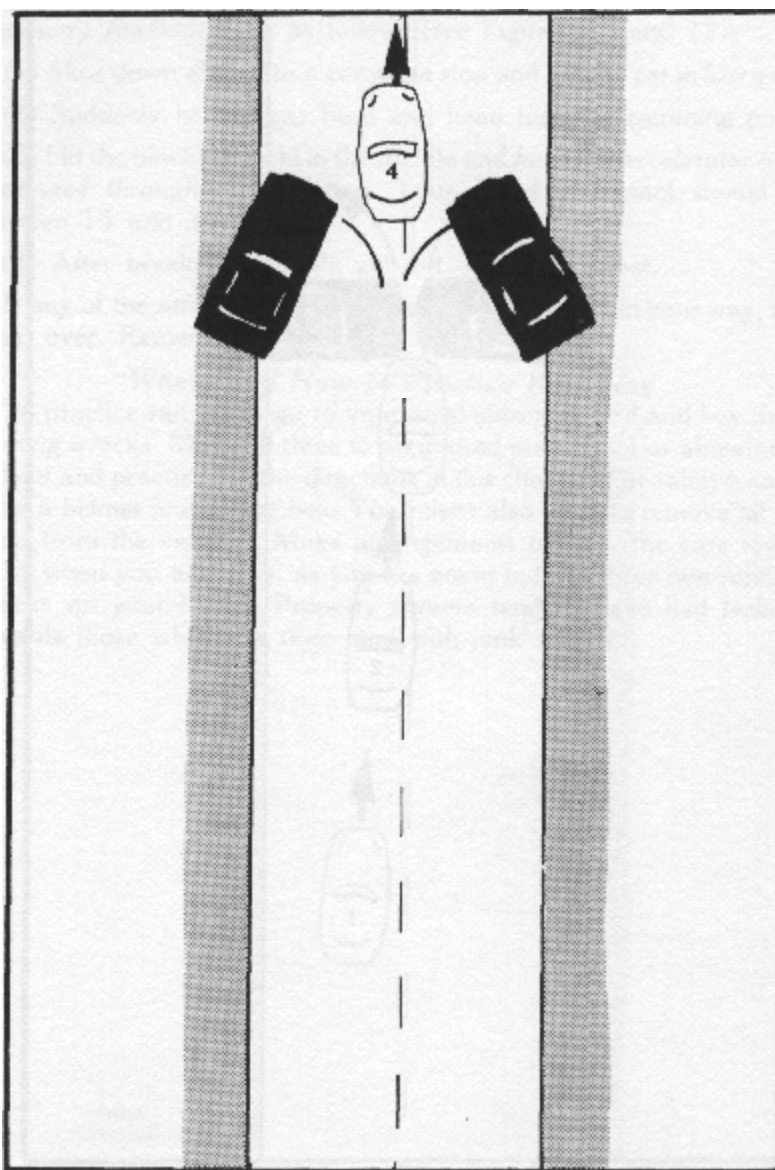
### ***Where and How to Practice Ramming***

To practice ramming, go to your local auto junkyard and buy three running wrecks. Move all three to an unused parking lot or abandoned airfield and practice per the directions in this chapter. For safety's sake, wear a helmet and a seat belt. You might also want to remove all the glass from the vehicles. Make arrangements to have the cars towed away when you are done, as you are going to have three non-running wrecks on your hands. Property owners tend to have bad feelings towards those who litter their land with junk vehicles.

**Figure 11**  
Ramming a Double Vehicle Blockade



**Figure 12**  
Ramming a Double Vehicle Blockade (cont'd)



## **VEHICLE ATTACK**

If you should be fortunate enough to get behind your attacker's vehicle, you can easily knock him off the road.

The most effective means of doing this is illustrated in Figure 13. Hit the enemy vehicle's bumper at the angle illustrated. You should be going 10 to 20 mph faster than he is. Remember to hit, not push, the vehicle.

After impact, the enemy's vehicle will go sliding sideways down the road until his tires regain traction. When this happens, his car will go in the direction it is pointing -- off the road.

Figure 14 illustrates another method to knock someone off the road. In this situation, you would pull alongside the rear of the enemy vehicle and crash into his rear wheel section. This will cause him to spin out and go off the road. Immediately after impact, hit the brakes and counter steer to break contact.

### ***Running Someone off the Road***

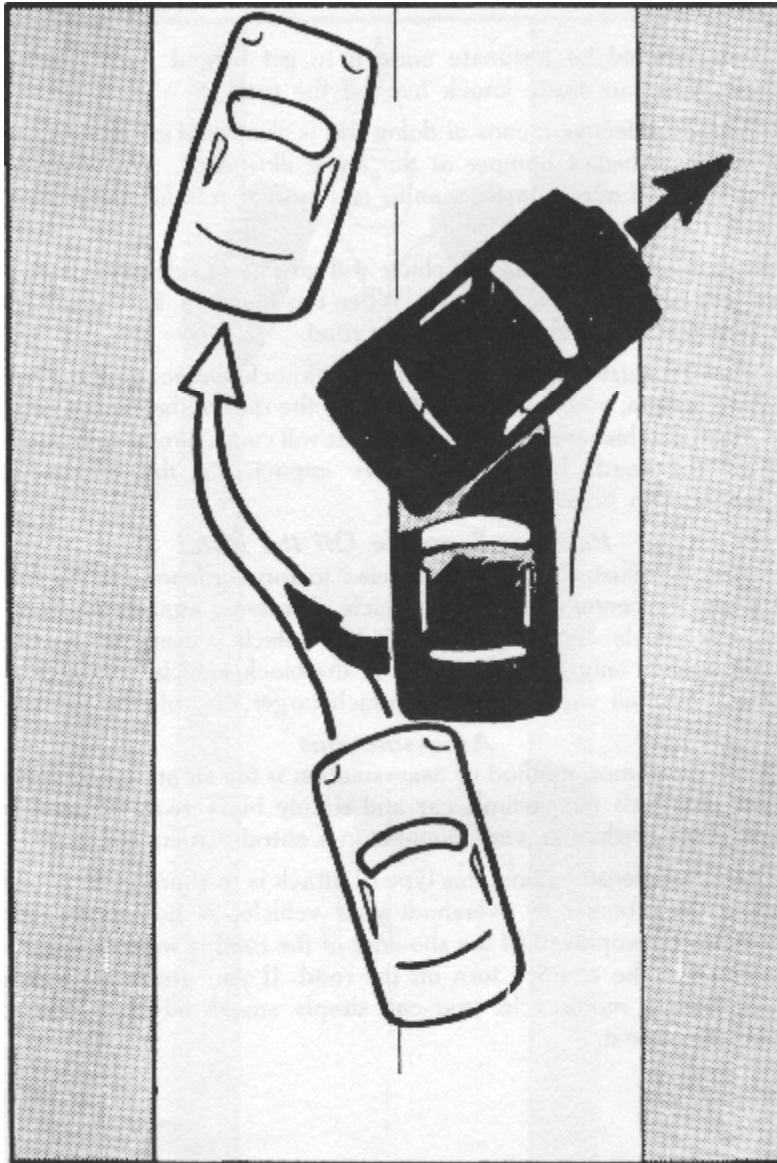
Figure 15 illustrates a method used to run someone off the road. Note how the center of the white vehicle is pressing against the front of the black vehicle. By doing this, the white vehicle is using its total body weight against only a small portion of the black vehicle. Through this method, a small car can force a much larger one off the road.

### ***Assassinations***

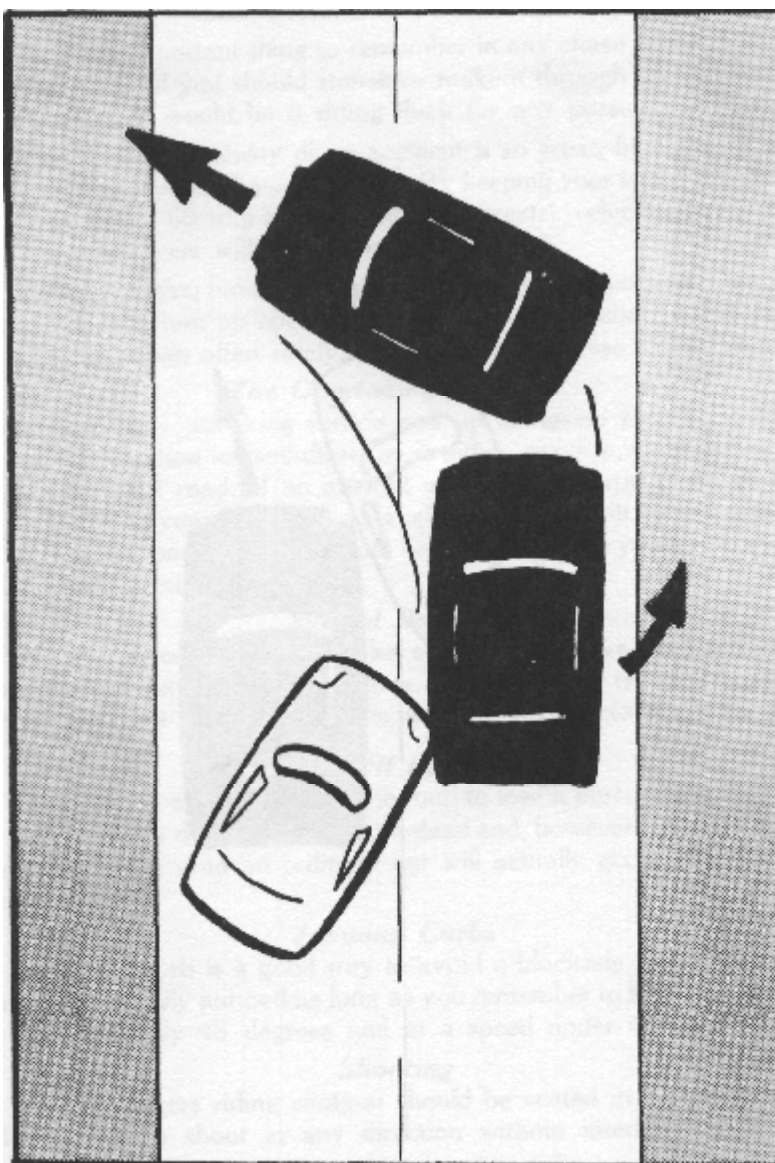
A very common method of assassination is for an attacking vehicle to pull alongside the victim's car and simply blast away at everyone inside. This method is very popular in Central America.

The best defense against this type of attack is to slam on the brakes, causing the attacker to overshoot your vehicle. A bootlegger's turn could also be employed (if the shoulder of the road is wide enough), or you could make a quick turn off the road. If you are faced with an attack from a motorcycle, you can simply smash into him, thereby ending the threat.

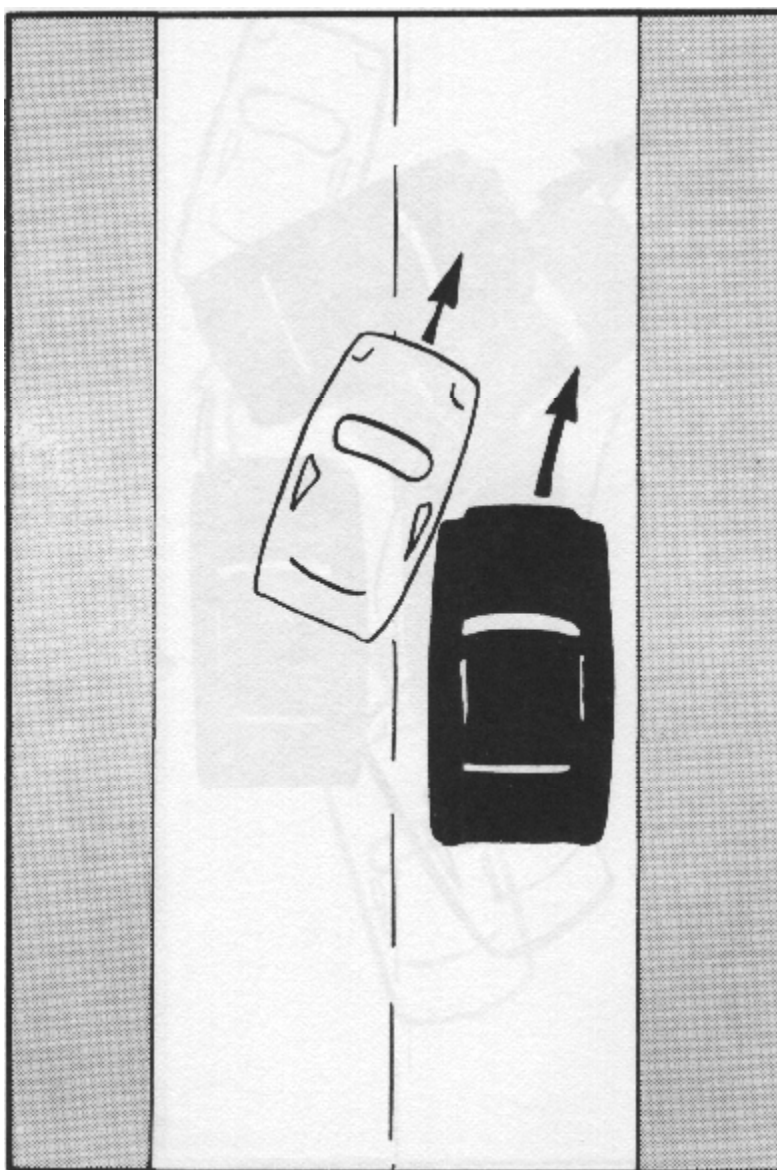
**Figure 13**  
Knocking a Vehicle off the Road



**Figure 14**  
Another Method of Knocking a Vehicle off the Road



**Figure 15**  
Running someone off the road





# **CHASE SITUATIONS**

The most important thing to remember in any chase situation is not to crash. Even if you should somehow make it through an accident in one piece, you would be a sitting duck for any pursuer.

Because the probability of an accident is so great, high speeds are not recommended in chase situations. By keeping your speed relatively low, say under 65 mph, you will have greater vehicle control and evasive maneuvers will be easier to accomplish.

Of course, if you have a superior car to that of your pursuer, you can just flat outrun him on open roads. On certain stretches of interstate highway, you can often safely run at speeds in excess of 100 mph.

## ***The Overtaking Vehicle***

Never let any attacking vehicle pull up alongside you. If he does manage to position himself there, he is either going to shoot, or try to run you off the road. If an attempt is made to overtake you, it will probably be on your left side. To make this more difficult, drive as far to the left as you possibly can. Should he try to overtake you anyway, try to swerve in front of him.

## ***Special Devices***

Special devices such as smoke screens, oil slicks, and spotlights should be employed just before turns. If your pursuer is blinded or goes into a skid just before a turn, he will very likely crash.

## ***Going Off the Road***

It may be necessary to go off the road to lose a pursuer. Be sure not to get stuck in a ditch or drive into a dead end, however. It is surprising how far off the road an ordinary car will actually go, if you drive it carefully.

## ***Jumping Curbs***

Jumping a curb is a good way to avoid a blockade in the street. A curb can be easily jumped as long as you remember to hit it at an angle of approximately 45 degrees and at a speed under 45 mph.

## ***Shooting***

Any passengers riding shotgun should be seated in the back. This allows them to shoot in any direction without interfering with the driver.

Targets of choice on the enemy vehicle are the driver and the front tires. Obviously, if the driver is incapacitated the chase will not continue. If either front tire goes flat, the attacker won't be able to steer. For best results, try to score a direct hit into the sidewall.

Since the first edition of this book, I have spent some time shooting at junk cars with firearms of various calibers. The results of my tests are as follows:

- (1) No pistol round can be counted on to penetrate the vehicle body or glass or to flatten a tire. Pistol rounds will crack the glass and deflect away. While the rounds I used (.45 and 9mm) did penetrate the tires, it took about 20 minutes for them to go completely flat.
- (2) Rifle rounds of .223 and .308 caliber will definitely penetrate any unarmored vehicle. The .308 flattened tires much faster than the .223.
- (3) Shotgun loads with the exception of slugs are useless for stopping any vehicle. They won't penetrate the glass, body, or the tires. Slugs, however, will blast huge holes through the vehicle and will almost instantly flatten a tire.

### ***If You Can't Get Away***

If you absolutely cannot get away from your pursuers, drive your car into a wooded area. When your car won't go any further, get out and get behind cover. If your pursuers are still intent on coming after you, they are going to have to exit their vehicle. When they do, you can ambush them.

Never give up when attacked. Violent criminals and terrorists almost always kill their victims. Even those few people who are held hostage and then released usually require some kind of psychological care after their ordeal. Some have even become permanent basket cases.

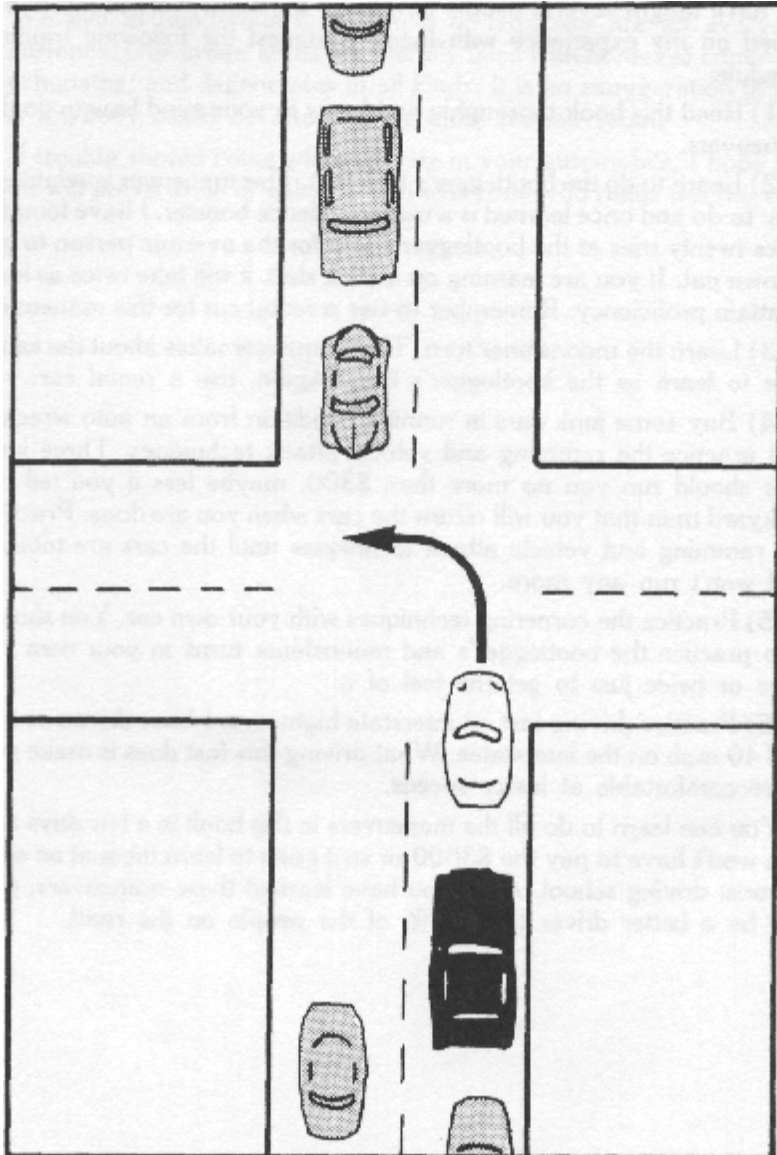
### ***A Useful Maneuver***

Figure 16 shows a maneuver which will lose almost any pursuer. By cutting just in front of traffic coming in opposing lanes, you make it almost impossible for anyone to follow.

**Figure 16**

**A Useful Evasive Maneuver**

By cutting in front of oncoming traffic, the intended victim (white car) makes it all but impossible for the attacker (black car) to follow.



I have taught several people how to do the maneuvers in this book. Based on my experience with them, I suggest the following training schedule:

- (1) Read this book thoroughly and know in your mind how to do the maneuvers.
- (2) Learn to do the bootlegger's turn first. This maneuver is relatively easy to do and once learned is a real confidence booster. I have found it takes twenty tries at the bootlegger's turn for the average person to get it down pat. If you are learning on a stick shift, it will take twice as long to attain proficiency. Remember to use a rental car for this maneuver.
- (3) Learn the moonshiner's turn. This maneuver takes about the same time to learn as the bootlegger's turn. Again, use a rental car.
- (4) Buy some junk cars in running condition from an auto wrecker and practice the ramming and vehicle attack techniques. Three junk cars should run you no more than \$300, maybe less if you tell the junkyard man that you will return the cars when you are done. Practice the ramming and vehicle attack techniques until the cars are totalled and won't run any more.
- (5) Practice the cornering techniques with your own car. You should also practice the bootlegger's and moonshiner's turns in your own car once or twice just to get the feel of it.
- (6) Practice driving fast on interstate highways. I have driven as fast as 140 mph on the interstates. What driving this fast does is make you more comfortable at lesser speeds.

You can learn to do all the maneuvers in this book in a few days and you won't have to pay the \$3000 or so it costs to learn them at an anti-terrorist driving school. After you have learned these maneuvers, you will be a better driver than 95% of the people on the road.

## **CONCLUSION**

We live in dangerous times. Acts of terrorism are an everyday occurrence. Our urban areas are literally filled with hordes of criminals, psychopaths, and degenerates of all kinds. It is no exaggeration to say that anybody could be attacked by these human scums.

If trouble should come while you are in your automobile, I hope this book will prove to be of value. I wish everyone who reads this the very best.

## USEFUL REFERENCES

The following publications are recommended for further study.

**EMERGENCY AND HIGH SPEED DRIVING TECHNIQUES** by John M. Clark, Jr.,  
Gulf Publishing Co., Houston, TX, 1976.

I found this book almost impossible to read. The author goes way overboard on theory and mathematical calculations. Nevertheless, it does contain some valuable information.

**FUNDAMENTALS OF PHYSICAL SURVEILLANCE** by Raymond P. Siljander.  
Charles C. Thomas Publishers, Springfield, IL, 1977.

This book is known as "the bible of surveillance". It has an excellent section on automobile surveillance.

**THE CRIMSON WEB OF TERROR** by Robert D Chapman,  
Paladin Press, Boulder, CO, 1980.

This is the best book I have read on terrorism. It is also one of the few that is not sympathetic to terrorists.

**VEHICLE MODIFICATIONS FOR URBAN SURVIVAL**  
C.W.L., Inc., Pasadena, CA. 1981.

A worthwhile book. Among other things, it contains plans for making a pressurized oil slick and smoke screen.

**DRIVING IN COMPETITION** by Alan Johnson,  
WAV. Norton & Company, New York. 1971.

**COMPETITION DRIVING** by Gerry Marshall,  
W. Foulsham & Co., Ltd., New York, 1979.

These are by far the best books written on racing. The first book is particularly strong on the fundamentals. The latter is for more advanced drivers.

In *Getaway*, a veteran dirt track racer and graduate of a high performance driving institute reveals everything you need to know about driving techniques for evasion and escape. All the techniques have been tested. All the instructions are illustrated. You'll learn about:

- Taking corners at high speeds
- The "bootlegger's turn"
- The "moonshiner's turn"
- Ramming techniques
- Handling double-vehicle road blocks
- Jumping curbs
- Running another vehicle off the road
- Handling your car in a chase
- Modifying your vehicle for evasive driving
- Losing someone who's tailing you
- And much more!

You've seen it all on TV — now learn to do it yourself! *Getaway* covers everything you need to become an expert wheelman.

ISBN 0-915179-98-9



9 0000



9 780915 179985